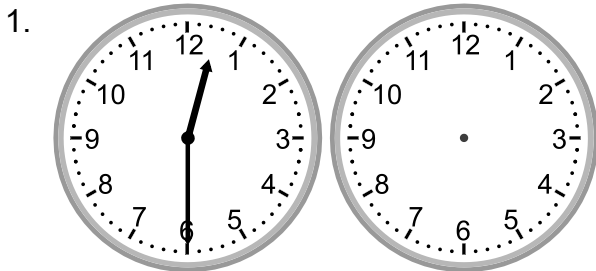


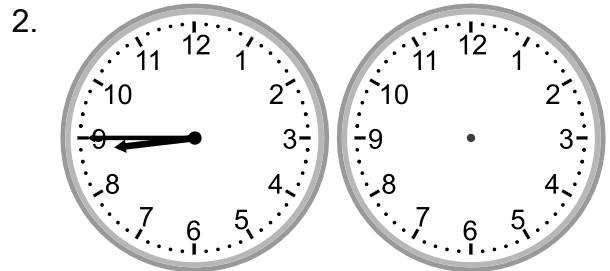
Elapsed time - forward and backwards (15 minute increments)

Grade 3 Time Worksheet

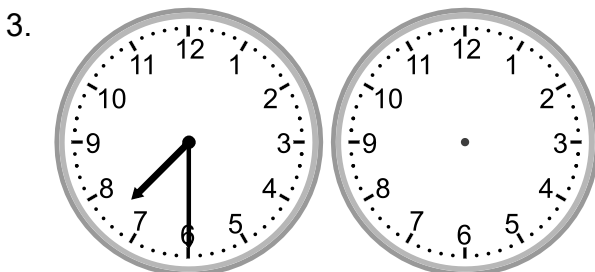
Draw the clock hands to show the time it was or will be.



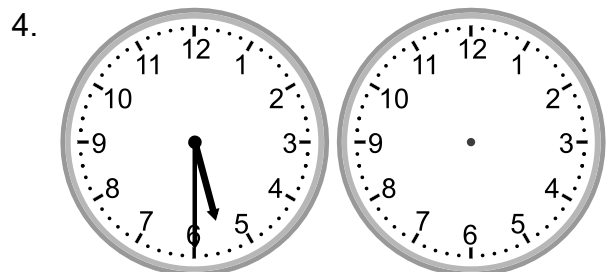
What time will it be in 1 hour 45 minutes?



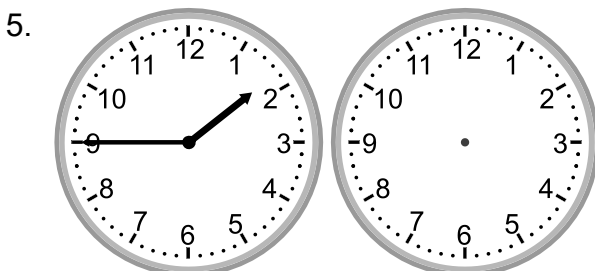
What time was it 5 hours 15 minutes ago?



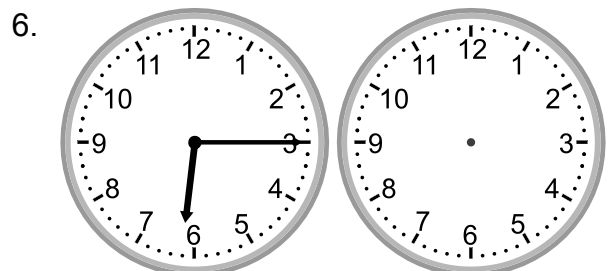
What time was it 4 hours 45 minutes ago?



What time was it 5 hours ago?



What time will it be in 3 hours?



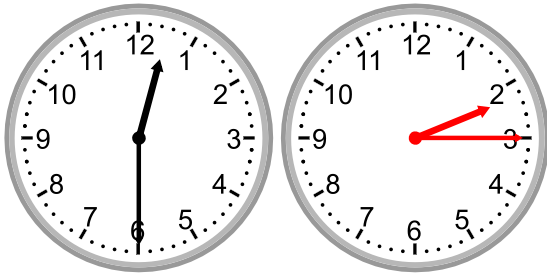
What time was it 2 hours 30 minutes ago?

Elapsed time - forward and backwards (15 minute increments)

Grade 3 Time Worksheet

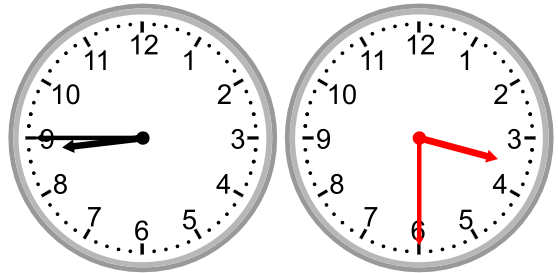
Answers:

1.



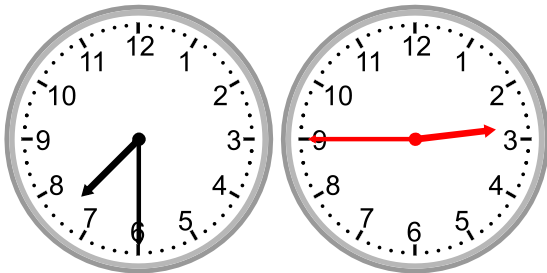
What time will it be in 1 hour 45 minutes?

2.



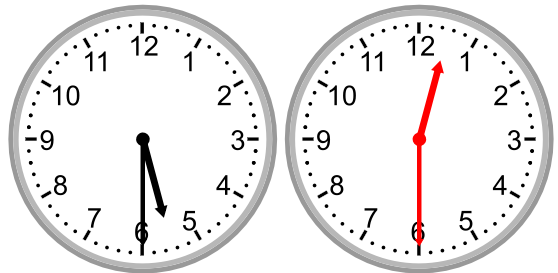
What time was it 5 hours 15 minutes ago?

3.



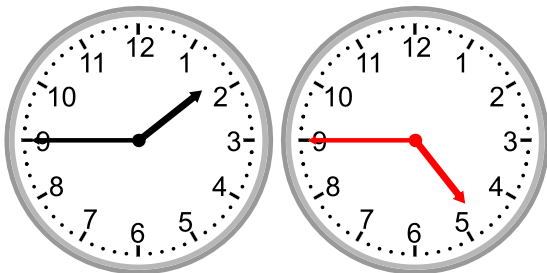
What time was it 4 hours 45 minutes ago?

4.



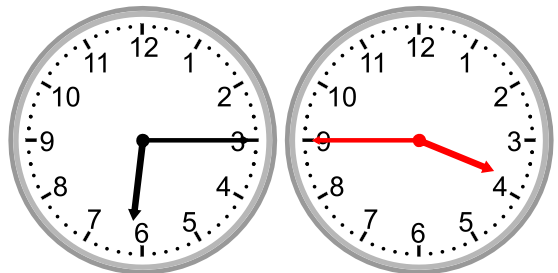
What time was it 5 hours ago?

5.



What time will it be in 3 hours?

6.



What time was it 2 hours 30 minutes ago?